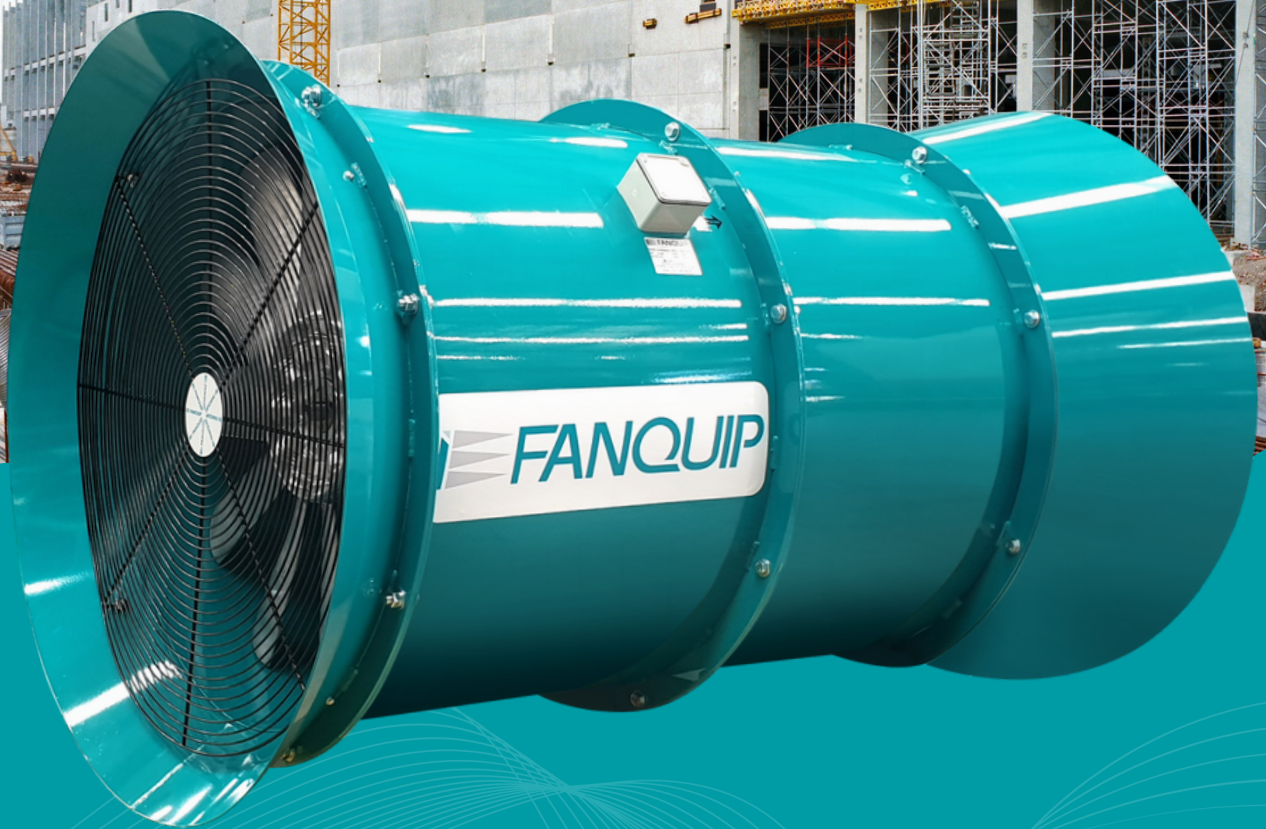


 **FANQUIP**
VENTILATION SOLUTIONS



All the fresh air you could ever need.

All from one place.

Certified System



Quality
ISO 9001





As Australia's leading fan company, Fanquip is well placed to advise, design & manufacture the complete range of fans and fan systems for industrial & manufacturing applications.

For almost 40 years, Fanquip has provided solutions for the industry to conquer ventilation and associated issues. Our specialty being turnkey solutions from initial consultation to installation and maintenance.

The initial contact is followed closely by the design proposal which then continues through each step of the process to reach a solution for individual requirements.

Internationally we provide our service and quality products, manufactured in Australia, with the strength and superiority to last beyond 20 years.



Our mission is to provide the turnkey solution that lasts forever.

We understand that industry and client needs often differ from one another. That's why we treat every request individually and purposefully to ensure the right solution is tailored to your unique needs.

Fanquip organises everything required. From consultation, ventilation equipment, streamlined ducting, brackets, custom fitments, freight, crane hire and more. Fanquip is the only solution you need.

Turnkey solutions.

Ventilation consulting.

Exemplifying professionalism: a commitment to your needs.

At Fanquip, professionalism is the guiding philosophy that shapes our service to the industry. We're recognised for our expertise in providing ventilation advice and equipment to various industrial facilities. For us, professionalism means meeting our customers' requirements at every stage of a project.

Fanquip understands the demands of the industrial environment and your needs and the seamless maintenance of our products are our utmost priority. When you choose us, our team will visit your site, meticulously note your requirements, inspect the area, and craft a solution tailored to your needs and budget.

Whether you're embarking on a new project or seeking maintenance for an existing ventilation system, Fanquip's commitment to service, quality, and professionalism remains unwavering. We pride ourselves on being your trusted partner, dedicated to ensuring the success and efficiency of your industrial endeavors.



Custom products.

Our specialty.

Fanquip has engineers who are readily available for perusal and determination of custom products for specific solutions. We pride ourselves on our ability to adapt or design new products or solutions for our clients.



Servicing & repairs.

At Fanquip, we offer full repairs and overhaul services for fans, impellers, motors, and associated products. With a large workshop facility, overhead crane, highly skilled technicians, and the largest fan testing chamber in Australia, it allows us to provide high quality and efficient servicing to get your equipment back on site to limit downtime and ensure a long ongoing service life.

Our services include:

- ✓ Fan casing repairs
- ✓ Impeller repairs or replacements
- ✓ Motor repairs or replacements
- ✓ Blasting, painting & powder coating
- ✓ Crack testing
- ✓ Impeller static & dynamic balancing
- ✓ Airflow testing



Table of contents.

Pedestal Air Circulators



10-11

Wall Mount Air Circulators



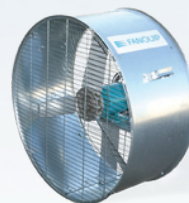
12-13

Transformer Cooling Fans



14

Utility Air Circulators



15

Giant Fans



16-17

Mobile Mancoolers



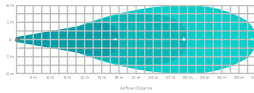
18-19

Mini Mancoolers



20-21

Mancoolers Air Flow Table



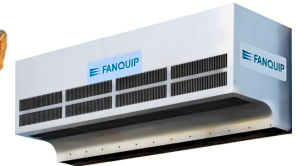
22

Mancooler Ancillaries



23

Air Curtains



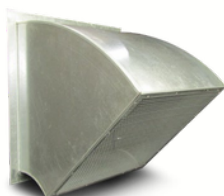
24-25

Wall Plate Exhaust Fans



26-27

Roll Over Cowls



28

Louvres & Dampers



29

Side Wall Exhaust Fans



30-31

End Wall Exhaust Fans



32



Table of contents.

Vertical Discharge Kits & Hooded Relief Vents



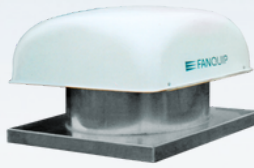
33

Vertical Discharge Roof Fans



34-35

Curb Base Hooded Roof Fans



36-37

Profile Base Hooded Roof Fans



38-41

Roof Filter Fans



42-43

Portable Blower Extractors



44

Portable Purging Fans



45

Vat Purging Fans



46

Venturi Type Air Movers



47

Belt Drive Axial Flow Fans



48-49

Direct Drive Axial Flow Fans



50-51

Axial Attachments



52

Forward Curve Centrifugal Fans



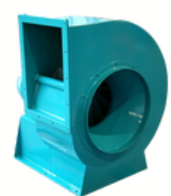
53

Backward Inclined Centrifugal Fans



54-55

Materials Handling Centrifugal Fans



56-57



Table of contents.

Dust Collection Systems



58

Fume Extractors



5

Negative Air Units



60

Heater Fans



61

Fan Accessories



62

Silencers



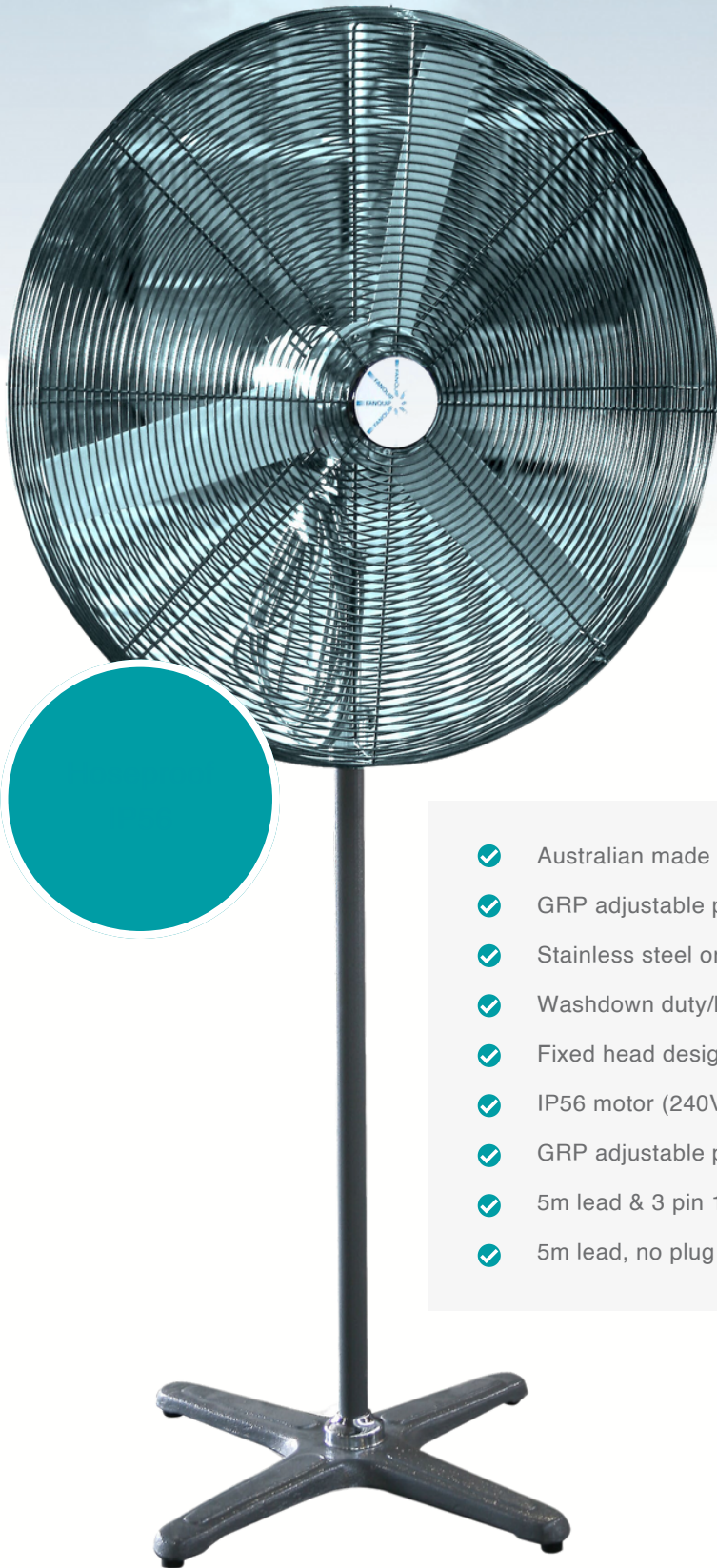
63

Impellers



64-65

Pedestal Air Circulators.



- ✓ Australian made
- ✓ GRP adjustable pitch blades
- ✓ Stainless steel or powder-coated steel construction
- ✓ Washdown duty/hoseproof IP56 rating
- ✓ Fixed head design – tilt & height adjustable
- ✓ IP56 motor (240V), IP55 motor (415V), IP69 (415V stainless steel)
- ✓ GRP adjustable pitch blades
- ✓ 5m lead & 3 pin 10A plug (240V models)
- ✓ 5m lead, no plug (415V models)

Pedestal Air Circulators.



Options

- Hazardous location rated – Exe, Exd, ExnA, Extd
- IP66 motor (415V models only)
- 2-speed motors (240V only)

Model No.	Fan Dia. (mm)	Motor Speed (RPM)	Motor Power (kW)	Voltage (V)	Free Air Volume (L/s)
5-46241P*	460	1400	0.20	240	3000
5-46243P*	460	1440	0.55	415	3000
5-60241P*	630	1400	0.20	240	6500
5-60243P*	630	1440	0.55	415	6500
5-80161P*	810	900	0.35	240	17000
5-80163P*	810	960	0.37	415	17000

*Add SS to model number for stainless steel.

Wall Mount Air Circulators.



Hoseproof
IP56

- ✓ Australian made
- ✓ Stainless steel or powder-coated steel construction
- ✓ Washdown duty/hoseproof IP56 rating
- ✓ Fixed head design – tilt & height adjustable
- ✓ IP56 motor (240V), IP55 motor (415V), IP69 motor (415V stainless steel)
- ✓ GRP adjustable pitch blades
- ✓ 5m lead & 3 pin 10A plug (240V models)
- ✓ 5m lead, no plug (415V models)

Wall Mount Air Circulators.



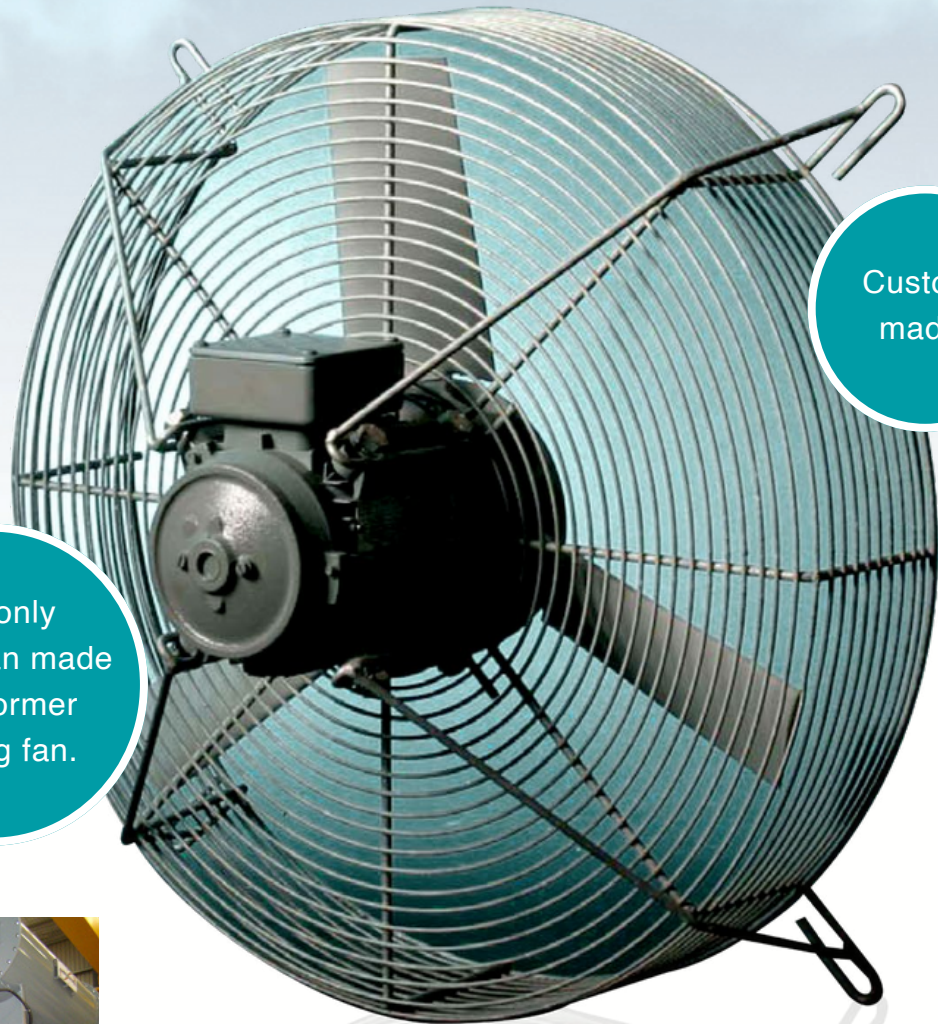
Options

- Hazardous location rated – Exe, Exd, ExnA, Extd
- IP66 motor (415V models only)
- 2-speed motors (240V only)

Model No.	Fan Dia. (mm)	Motor Speed (RPM)	Motor Power (kW)	Voltage (V)	Free Air Volume (L/s)
5-46241W*	460	1400	0.20	240	3000
5-46243W*	460	1440	0.55	415	3000
5-60241W*	630	1400	0.20	240	6500
5-60243W*	630	1440	0.55	415	6500
5-80161W*	810	900	0.35	240	17000
5-80163W*	810	960	0.37	415	17000

*Add SS to model number for stainless steel.

Transformer Cooling Fans.



The only Australian made transformer cooling fan.

Custom-made.



- ✓ Australian made to suit Australian conditions
- ✓ Continuously rated
- ✓ Hot dip galvanised casing
- ✓ IP56 motor
- ✓ GRP adjustable pitch blades

Model No.	Fan Dia. (mm)	Motor Speed (RPM)	Motor Power (kW)	Free Air Volume (L/s)	Voltage (V)
5-63163	600	960	0.37	2300	415
5-66163	600	960	0.37	3000	415
5-66243	600	1440	0.75	3700	415

Utility Air Circulators.

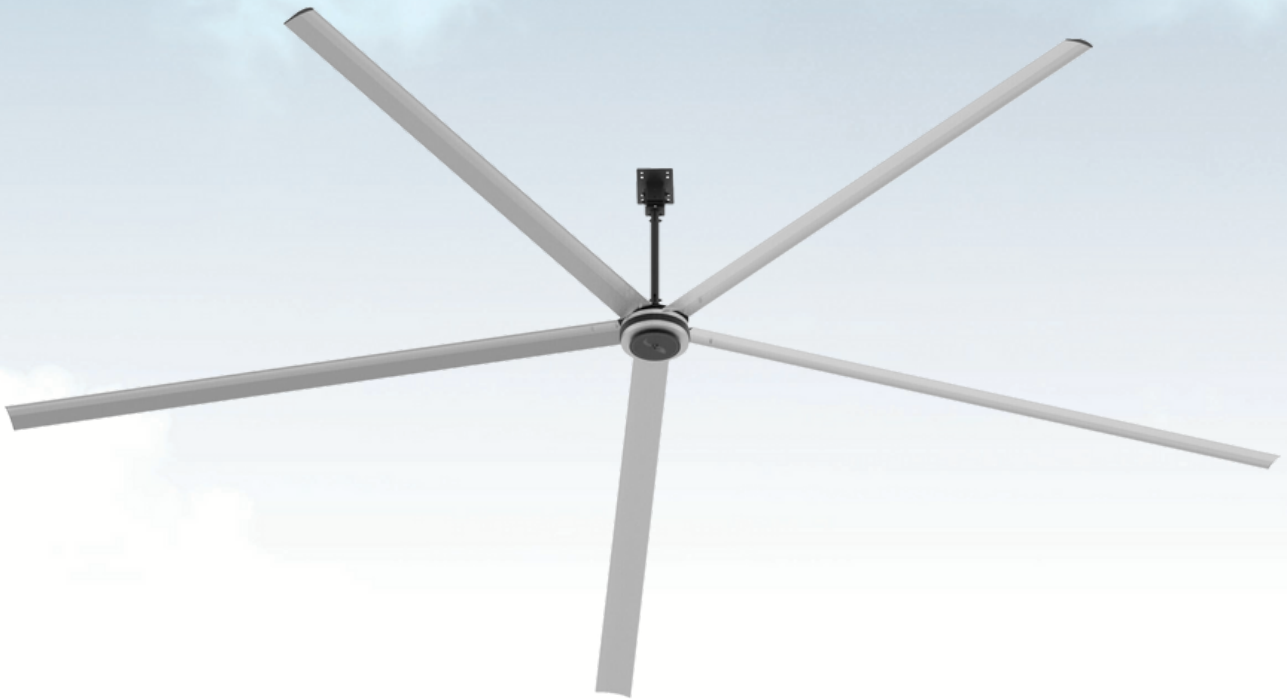
Fully galvanised



- ✓ Galvanised steel casing
- ✓ GRP adjustable pitch blades
- ✓ Inlet & outlet finger guards
- ✓ IP55 motor
- ✓ Lead & 3-pin plug (plug supplied on 240V model only)
- ✓ Lightweight for fast & easy installation
- ✓ Side mount hanging handles

Model No.	Fan Dia. (mm)	Motor Speed (RPM)	Motor Power (kW)	Free Air Volume (L/s)	Voltage (V)
17-80161	800	960	0.15	3775	240
17-81161	800	960	0.35	5115	240
17-81163	800	960	0.37	5115	415

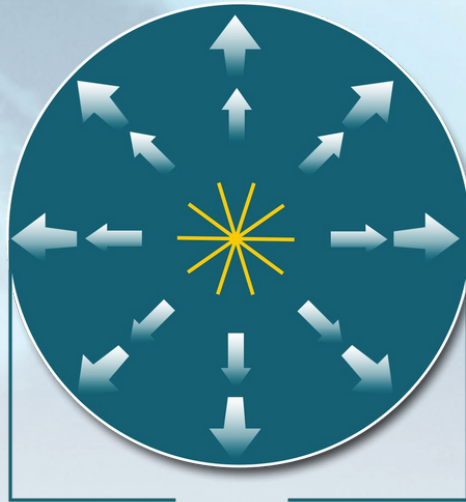
Giant Fans.



- ✓ Wall mount HMI controller with 7 speed settings
- ✓ Network for up to 20 fans
- ✓ Reverse mode for destratification
- ✓ 5 aluminium blades
- ✓ Guy wire support set

Model No.	Fan Dia. (mm)	Motor Speed (RPM)	Motor Power (kW)	Full Load Amps (A)	Voltage (V)
14-GIANT42	4200	82	0.5	1.7	240
14-GIANT54	5500	69	1.2	2.4	240
14-GIANT73	7300	54	1.2	3.7	240

Model No.	Covered Area (m ²)	Free Air Volume (L/S) (AMCA 230-99)	Free Air Volume (L/s) (AMCA 230-15)	Noise* (dBA@3m)	Weight (kg)
14-GIANT42	490	55390	39170	< 50	37
14-GIANT54	750	112290	79410	< 50	104
14-GIANT73	1300	234470	165810	< 50	113



Up to 1300m²

More coverage

Deeper jets of air maximise effective coverage area.



Up to 36m

More comfortable people

Deeper jets of air and greater reach combine to move air over obstacles.

Why choose Giant Fans?

- ✓ Improves personnel comfort & productivity
- ✓ Very low power consumption
- ✓ Low maintenance
- ✓ Easy installation
- ✓ Whisper quiet noise levels
- ✓ Summer cooling - reduce perceived temperatures by up to 7°C
- ✓ Winter heat destratification - reduce heating costs by up to 30%

Mobile Mancoolers.



- ✓ Premium powder-coated steel casing
- ✓ Inlet & outlet finger guards
- ✓ IP55 motor
- ✓ GRP adjustable pitch blades
- ✓ Isolating switch

- ✓ 5m lead & 3 pin plug
(415V models exclude plug)
- ✓ Adjustable discharge direction
- ✓ Top mount lifting hook
- ✓ Heavy-duty wheels for ease of handling

Mobile Mancoolers.



Options

- Aluminium or stainless steel casings
- Hot dip galvanised finish
- Aluminium adjustable pitch blades
- Hazardous location rated – Exe, Exd, ExnA, Extd
- IP56 or IP66 motor
- Compressed air powered
- Corporate colours & labels available
- Wall/ceiling mounting bracket

Model No.	Fan Dia. (mm)	Motor Speed (RPM)	Motor Power (kW)	Free Air Vol. (L/s)	Voltage (V)
1-40241*	400	1440	0.55	1500	240
1-40243*	400	1440	0.55	1500	415
1-40481*	400	2880	1.10	2150	240
1-40483*	400	2880	1.10	2150	415
1-50241*	500	1440	0.75	2450	240
1-50243*	500	1440	0.75	2450	415
1-60241*	600	1440	1.50	4400	240
1-60243*	600	1440	1.50	4400	415
1-61241*	600	1440	2.20	5800	240
1-61243*	600	1440	3.00	6600	415
1-80161*	800	960	1.50	7000	240
1-80163*	800	960	1.50	7000	415
1-80241*	800	1440	2.20	8000	240
1-80243*	800	1440	3.00	9000	415
1-10123*	1000	720	3.00	12000	415
1-10163*	1000	960	5.50	17000	415

*Add W to the model number for Wall Mount.

*Add CM to model number for Ceiling Mount.

Mini Mancoolers.



Adjustable
airflow
direction

- ✓ Premium powder-coated steel casing
- ✓ Inlet & outlet finger guards
- ✓ IP55 motor
- ✓ GRP adjustable pitch blades
- ✓ Isolating switch

- ✓ 5m lead & 3 pin plug
(415V models exclude plug)
- ✓ Adjustable discharge direction
- ✓ Side mount carry handles

Mini Mancoolers.

Options

- Aluminium or stainless steel casings
- Hot dip galvanised finish
- Aluminium adjustable pitch blades
- Hazardous location rated – Exe, Exd, ExnA, Extd
- IP56 or IP66 motor
- Compressed air powered
- Corporate colours & labels available
- Wall/ceiling mounting bracket



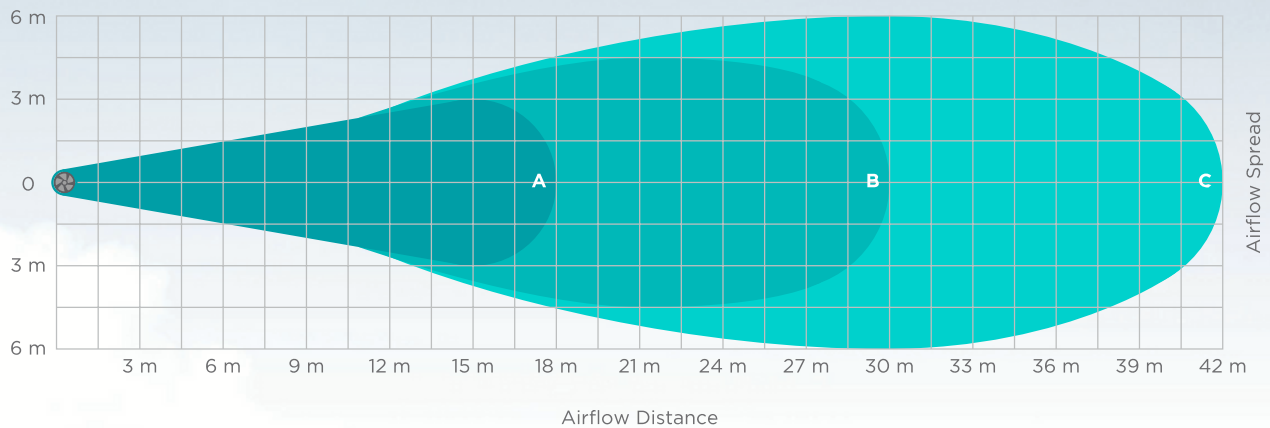
Model No.	Fan Dia. (mm)	Motor Speed (RPM)	Motor Power (kW)	Free Air Vol. (L/s)	Voltage (V)
1-30241*	300	1440	0.37	600	240
1-30243*	300	1440	0.37	600	415
1-30481*	300	2880	0.55	1400	240
1-30483*	300	2880	0.55	1400	415
1-41241*	400	1440	0.55	1550	240
1-41243*	400	1440	0.55	1550	415
1-41481*	400	2880	1.10	2150	240
1-41483*	400	2880	1.10	2150	415

*Add W to model number for Wall Mount.

*Add CM to model number for Ceiling Mount.



Mancoolers Airflow Table.



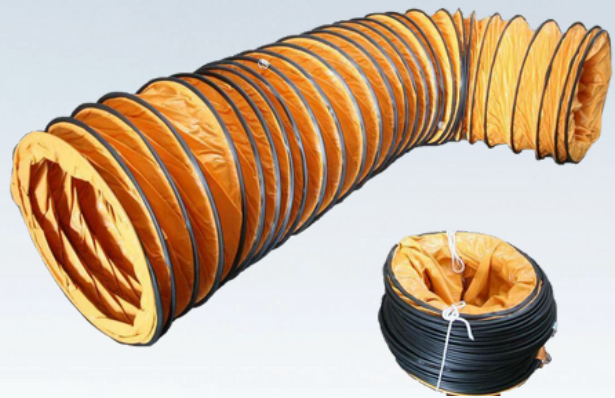
Darker shaded areas indicate higher air velocities.

Model No.	Air Velocity (m/s)		
	A	B	C
1-30241/3	2	1	1
1-30481/3	5	3	2
1-41241/3	3	2	1
1-41481/3	5	3	2
1-40241/3	3	2	1
1-40481/3	5	3	2
1-50241/3	3	2	2
1-60241/3	4	2	2
1-61241/3	5	3	2
1-80161/3	3	2	2
1-80241/3	4	3	2
1-10123	3	2	2
1-10163	5	3	2

Mancooler Ancillaries.

Flexible Ducting

- Heavy-duty ducting suitable for both supply & extraction
- Used in factories, construction sites & underground
- 5m or 10m lengths available
- 300mm to 1000mm diameter
- FRAS (Fire Retardant Anti-Static) option



Layflat Ducting

- Economical clear plastic ducting for positive pressure air movement
- Supplied in 20kg rolls (can be cut to size)
- 300mm to 800mm diameter

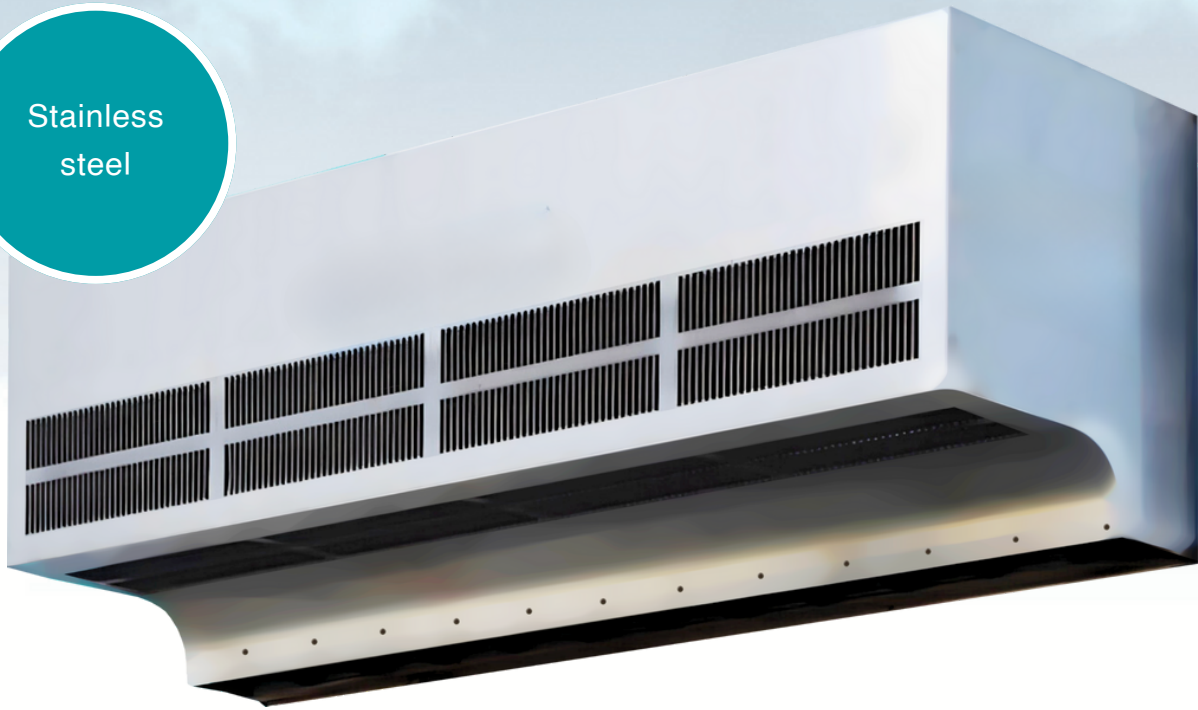
Hydroblast Attachments

- Provides fine water mist for easy evaporation & fast cooling
- Used for dust suppression and personnel, machinery & livestock cooling
- Fit to Mancoolers & Air Circulators
- 2 to 4 nozzles (1 nozzle for Air Circulators)



Air Curtains.

Stainless steel

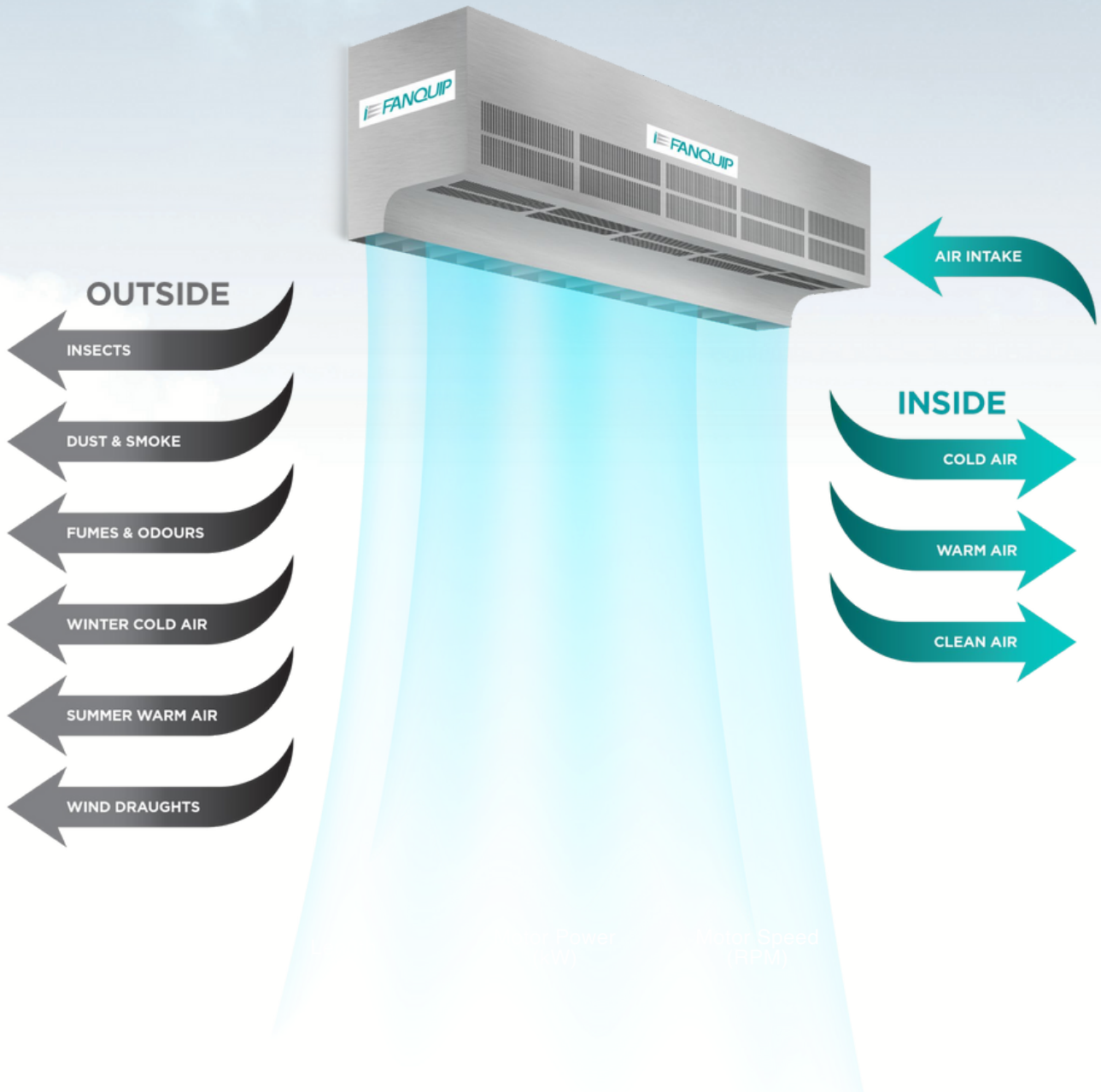


- ✓ Ideal for abattoirs, bakeries, coolrooms, food processing plants & the pharmaceutical industry
- ✓ Meets AQIS requirements of 8 m/second at 900mm above floor level

- ✓ Australian made
- ✓ Stainless steel construction
- ✓ Washdown duty/hoseproof IP56 rated
- ✓ Can be mounted side by side



Air Curtains.



Model No.	Fan Dia. (mm)	Motor Power (kW)	Motor Speed (RPM)	Motor Speed (RMP)	Voltage (V)
13-15091SS	900	0.75	1440	1440	240
13-15093SS	900	0.75	1440	1440	415
13-15121SS	1200	1.5	1440	1440	240
13-15123SS	1200	1.5	1440	1440	415
13-15151SS	1500	2.2	1440	1440	240
13-15153SS	1500	2.2	1440	1440	415

Wall Plate Exhaust Fans.



Premium
powder-coat
finish



- ✓ Premium powder-coated steel casing
- ✓ Inlet & outlet finger guards
- ✓ IP55 motor
- ✓ GRP adjustable pitch blades
- ✓ 2m lead with 3-pin IOA plug (240 models only)
- ✓ 3m lead with no plug (415V models only)

Wall Plate Exhaust Fans.

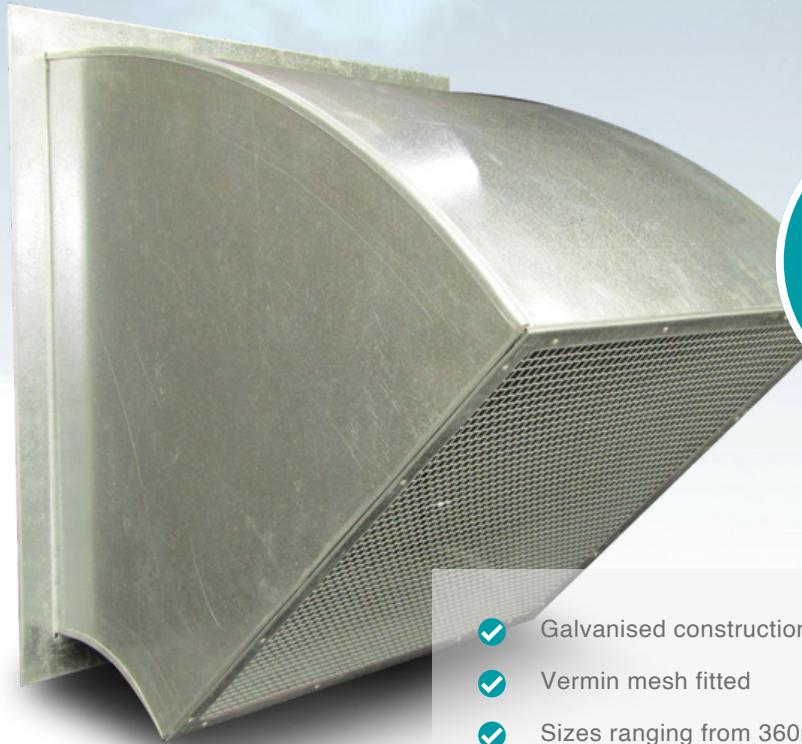


Options

- Aluminium or stainless steel casings
- Hot dip galvanised finish
- Aluminium adjustable pitch blades
- Hazardous location rated – Exe, Exd, ExnA, Extd
- IP56 or IP66 motor
- Supply air version available

Model No.	Fan Dia. (mm)	Motor Speed (RPM)	Motor Power (kW)	Free Air Vol. (L/s)	Voltage (V)
4-30241	300	1440	0.37	654	240
4-30243	300	1440	0.37	654	415
4-40241	400	1440	0.55	1550	240
4-40243	400	1440	0.55	1550	415
4-50161	500	960	0.37	1550	240
4-50163	500	960	0.37	1550	415
4-50241	500	1440	0.75	2450	240
4-50243	500	1440	0.75	2450	415
4-60161	600	960	0.37	3200	240
4-60163	600	960	0.37	3200	415
4-60241	600	1440	1.10	4400	240
4-60243	600	1440	1.10	4400	415
4-80123	800	720	0.55	5600	415
4-80161	800	960	1.10	7000	240
4-80163	800	960	1.10	7000	415
4-10123	1000	720	1.50	10800	415
4-12123	1200	720	2.20	15000	415
4-15123	1500	720	3.00	22000	415

Roll Over Cowls.



45° turn down for weather protection

- ✓ Galvanised construction
- ✓ Vermin mesh fitted
- ✓ Sizes ranging from 360mm to 1525mm square
- ✓ For installation with Wall Plate Exhaust Fans for weather protection



Options

- Stainless steel construction
- Filters fitted for clean air supply
- Acoustic design for noise reduction

To Fit Fan (mm)	Model No.
300	14-6330
400	14-6430
500	14-6530
600	14-6630
800	14-6830
1000	14-6103
1200	14-6123
1500	14-6153

Louvres & Dampers.



Opens when fan is in operation

Gravity Closing Louvres

- Aluminium/galvanised or stainless steel construction
- Sizes ranging from 360mm to 1524mm square

Volume Control Dampers

- Aluminium or stainless steel construction
- Available in manual or motorised control
- Manufactured to any size



Fixed Wall Louvres

- Aluminium, galvanised or stainless steel construction
- Range of colours available
- Vermin mesh fitted
- Manufacture to any size
- Option of filtered or acoustic design

Side Wall Exhaust Fans.



Direct
drive

Options

- Hot dip galvanised casing / galvanised housing
- Aluminium gravity closing damper
- Inlet finger guard
- IP55 motor
- GRP adjustable pitch blades
- 2m lead & 3 pin 10A plug (240V models)
- 3m lead, no plug (415V models)

- ✓ Aluminum or stainless steel casings
- ✓ Powder-coated finish
- ✓ Aluminium adjustable pitch blades
- ✓ Hazardous location rated – Exe, Exd, ExnA, Extd
- ✓ IP56 or IP66 motor
- ✓ Motorised damper

Side Wall Exhaust Fans.



Model No.	Fan Dia. (mm)	Motor Speed (RPM)	Motor Power (kW)	Free Air Vol. (L/s)	Voltage (V)
18-30481	300	2880	0.55	1100	240
18-30483	300	2880	0.55	1100	415
18-40241	400	1440	0.55	1450	240
18-40243	400	1440	0.55	1450	415
18-50241	500	1440	0.75	2450	240
18-50243	500	1440	0.75	2450	415
18-60161	600	960	0.37	3200	240
18-60163	600	960	0.37	3200	415
18-60241	600	1440	1.10	4400	240
18-60243	600	1440	1.10	4400	415
18-80163	800	960	1.10	7000	415
18-10123	1000	720	1.50	10800	415
18-12123	1200	720	2.20	15000	415

End Wall Exhaust Fans.



Belt drive

- ✓ Galvanised casing
- ✓ Galvanised gravity closing damper
- ✓ Inlet finger guard
- ✓ IP55 motor
- ✓ Stainless steel fixed blades

Model No.	Fan Dia. (mm)	Motor Power (kW)	Fan Speed (RPM)	Motor Speed (RPM)	Voltage (V)	Free Air Vol. (L/s)
18-10683CP	1060	0.75	460	1440	415	5140
18-13583CP	1350	1.10	460	1440	415	11055

Vertical Discharge Kits & Hooded Relief Vents.



- ✓ Galvanised construction
- ✓ Butterfly damper to prevent rain ingress
- ✓ Spigot or flanged connection
- ✓ Used for ducted exhaust systems

Model No.	Dia. (mm)
14-VDK300	300
14-VDK400	400
14-VDK500	500
14-VDK600	600
14-VDK700	700
14-VDK800	800
14-VDK1000	1000
14-VDK1200	1200

Options

- Stainless steel construction



Options

- Stainless steel construction

Model No.	Dia. (mm)
7-RV300	300
7-RV400	400
7-RV500	500
7-RV600	600
7-RV700	700
7-RV800	800
7-RV1000	1000
7-RV1200	1200

- ✓ Fibreglass hood/hot dip galvanised casing
- ✓ Birdmesh protection
- ✓ Curb base, spigot or flanged connection
- ✓ Used for air intake or exhaust systems or pressure relief in buildings

Vertical Discharge Roof Fans.



Options

- Aluminium adjustable pitch blades
- Aluminium or stainless steel casings
- Belt driven or bifurcated design
- Hazardous location rated – Exe, Exd, ExnA, Extd
- IP56 or IP66 motor
- Smoke spill rated
- Upstand for fan mounting

- ✓ Vertical discharge of airflow
- ✓ Hot dip galvanised casing
- ✓ Butterfly damper to prevent rain ingress
- ✓ IP55 motor
- ✓ GRP adjustable pitch blades
- ✓ External junction box
- ✓ 700mm lead, no plug

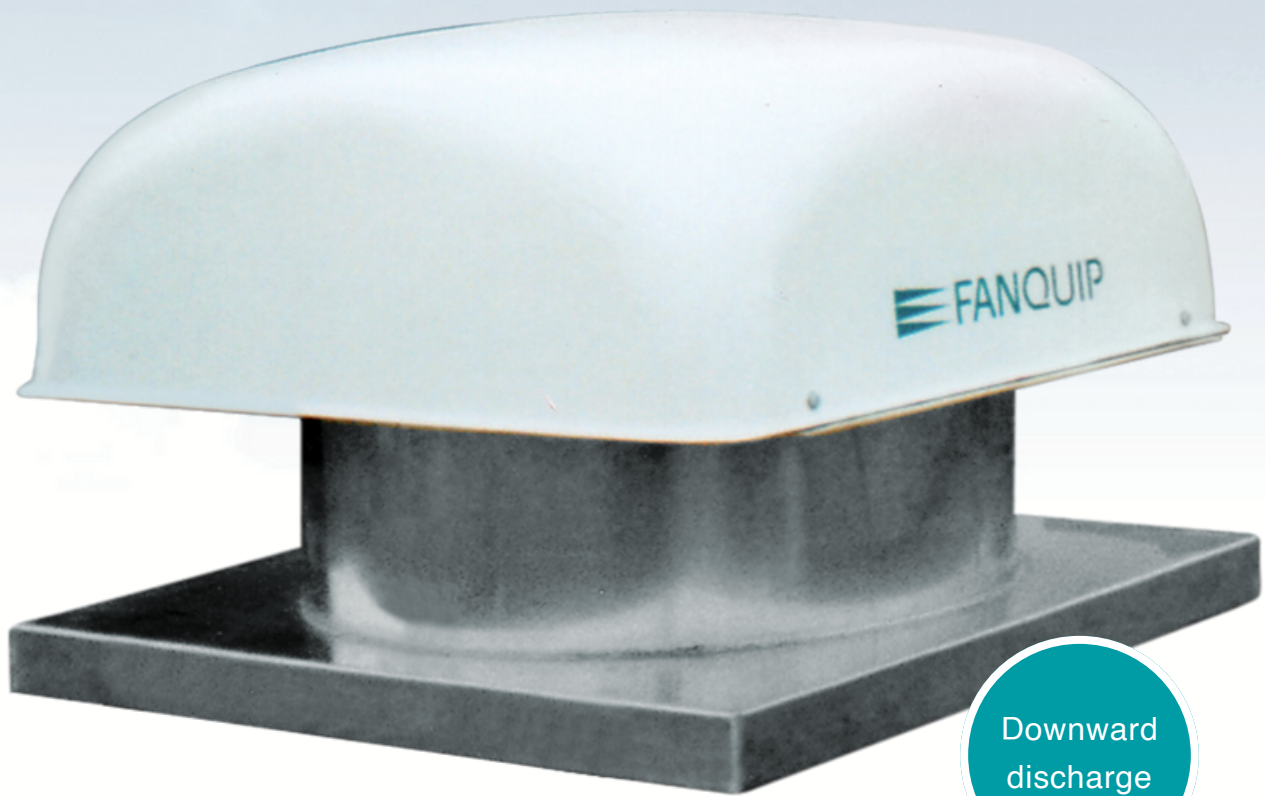
Vertical Discharge Roof Fans.

Weather proof butterfly dampers



Model No.	Fan Dia. (mm)	Motor Speed (RPM)	Motor Power (kW)	Free Air Vol. (L/s)	Voltage (V)
3-30241	300	1440	0.37	600	240
3-30243	300	1440	0.37	600	415
3-30481	300	2880	0.55	1100	240
3-30483	300	2880	0.55	1100	415
3-40241	400	1440	0.55	1480	240
3-40243	400	1440	0.55	1480	415
3-50241	500	1440	0.75	2400	240
3-50243	500	1440	0.75	2400	415
3-60161	600	960	0.37	3120	240
3-60163	600	960	0.37	3120	415
3-60241	600	1440	1.50	4360	240
3-60243	600	1440	1.50	4360	415
3-80123	800	720	0.55	5500	415
3-80161	800	960	1.10	6900	240
3-80163	800	960	1.10	6900	415
3-10123	1000	720	1.50	10040	415
3-12123	1200	720	2.20	14000	415
3-15123	1500	720	3.00	19000	415

Curb Base Hooded Roof Fans.



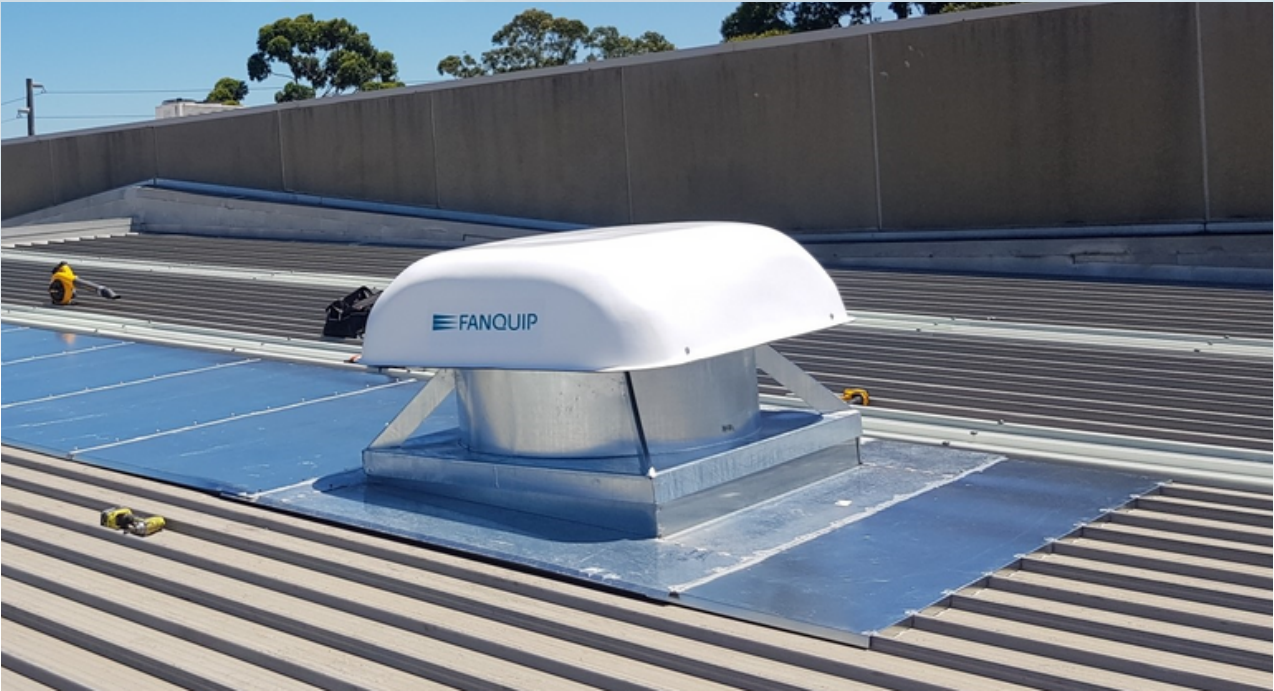
Downward discharge

Options

- Aluminium or stainless steel casings
- Belt driven or bifurcated design
- Aluminium adjustable pitch blades
- Hazardous location rated - Exe, Exd, ExnA, Extd
- IP56 or IP66 motor
- Available without fan/motor as a relief vent
- Upstand for fan mounting

- ✓ Exhaust or supply air versions available
- ✓ Fibreglass hood/hot dip galvanised casing
- ✓ Birdmesh protection
- ✓ IP55 motor
- ✓ GRP adjustable pitch blades
- ✓ Weatherproof design
- ✓ External junction box
- ✓ 700mm lead no plug

Curb Base Hooded Roof Fans.



Model No.	Fan Dia. (mm)	Motor Speed (RPM)	Motor Power (kW)	Free Air Vol. (L/s)	Voltage (V)
7-30241	300	1440	0.37	600	240
7-30243	300	1440	0.37	600	415
7-30481	300	2880	0.55	1100	240
7-30483	300	2880	0.55	1100	415
7-40241	400	1440	0.55	1480	240
7-40243	400	1440	0.55	1480	415
7-50161	500	960	0.37	1629	240
7-50163	500	960	0.37	1629	415
7-50241	500	1440	0.75	2350	240
7-50243	500	1440	0.75	2350	415
7-60161	600	960	0.37	3010	240
7-60163	600	960	0.37	3010	415
7-60241	600	1440	1.10	4300	240
7-60243	600	1440	1.10	4300	415
7-80123	800	720	0.55	5400	415
7-80163	800	960	1.10	6800	415
7-10123	1000	720	1.50	10000	415
7-12123	1200	720	2.20	14000	415

Profile Base Hooded Roof Fans.

Save 24%
of capital
cost



Cuts install
time
by 50%

- ✓ Exhaust or supply air versions available
- ✓ Fibreglass hood & base / Hot dip galvanised casing
- ✓ Profile base to match a wide range of roof profiles
- ✓ Simple installation - no upstand or overflashings required
- ✓ Birdmesh protection
- ✓ Weatherproof design
- ✓ IP55 motor
- ✓ GRP adjustable pitch blades
- ✓ External junction box
- ✓ 700mm lead, no plug

Options

- Aluminium or stainless steel casings
- Wide range of colour options available
- Aluminium adjustable pitch blades
- Hazardous location rated - Exe, Exd, ExnA, Extd
- IP56 or IP66 motor
- Available without fan/motor as a relief vent

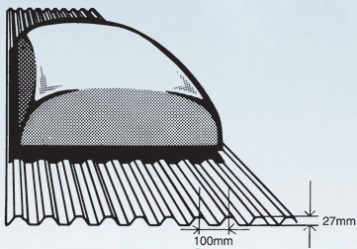
Profile Base Hooded Roof Fans.



Model No.	Fan Dia. (mm)	Motor Speed (RPM)	Motor Power (kW)	Free Air Vol. (L/s)	Voltage (V)	Base
7-40241*	400	1440	0.55	1484	240	CI/TD/SS/SD
7-40243*	400	1440	0.55	1484	415	CI/TD/SS/SD
7-60161*	600	960	0.37	3019	240	CI/TD/SS/DR/SD/LS
7-60163*	600	960	0.37	3019	415	CI/TD/SS/DR/SD/LS
7-60241*	600	1440	1.10	4300	240	CI/TD/SS/DR/SD/LS
7-60243*	600	1440	1.10	4300	415	CI/TD/SS/DR/SD/LS
7-80123*	800	720	0.55	5400	415	CI/TD/SS
7-80163*	800	960	1.10	6800	415	CI/TD/SS
7-10123*	1000	720	1.50	10000	415	CI/TD/SD/LS
7-12123*	1200	720	2.20	14000	415	CI/TD/SD/LS

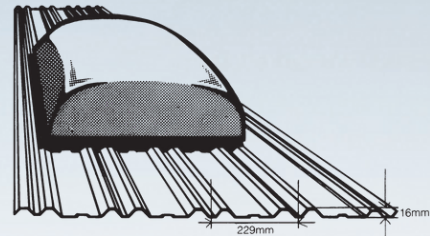
*Add the 2 letters from the 'Base' column to the model number for the required profile base type.

Profile Base Options.



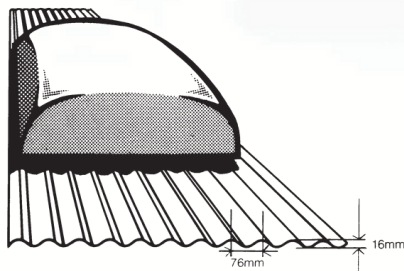
Longspan (LS)

600mm - 1200mm



Double Rib & Span 4 (DR)

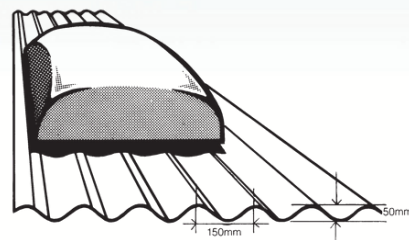
600mm



Corrugated Iron (CI)

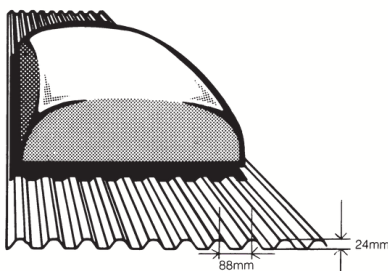
400mm - 600mm - 800mm

1000mm - 1200mm



Super Six (SS)

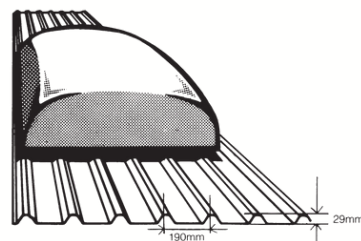
400mm - 600mm - 800mm



Spandek (SD)

400mm - 600mm

1000mm - 1200mm



Trimdek (TD)

400mm - 600mm - 800mm

1000mm - 1200mm

*Other profiles are available - please contact us for details.

Profile Base Options.



A wide range of colour options are available. Please contact us for more information.

Roof Filter Fans.

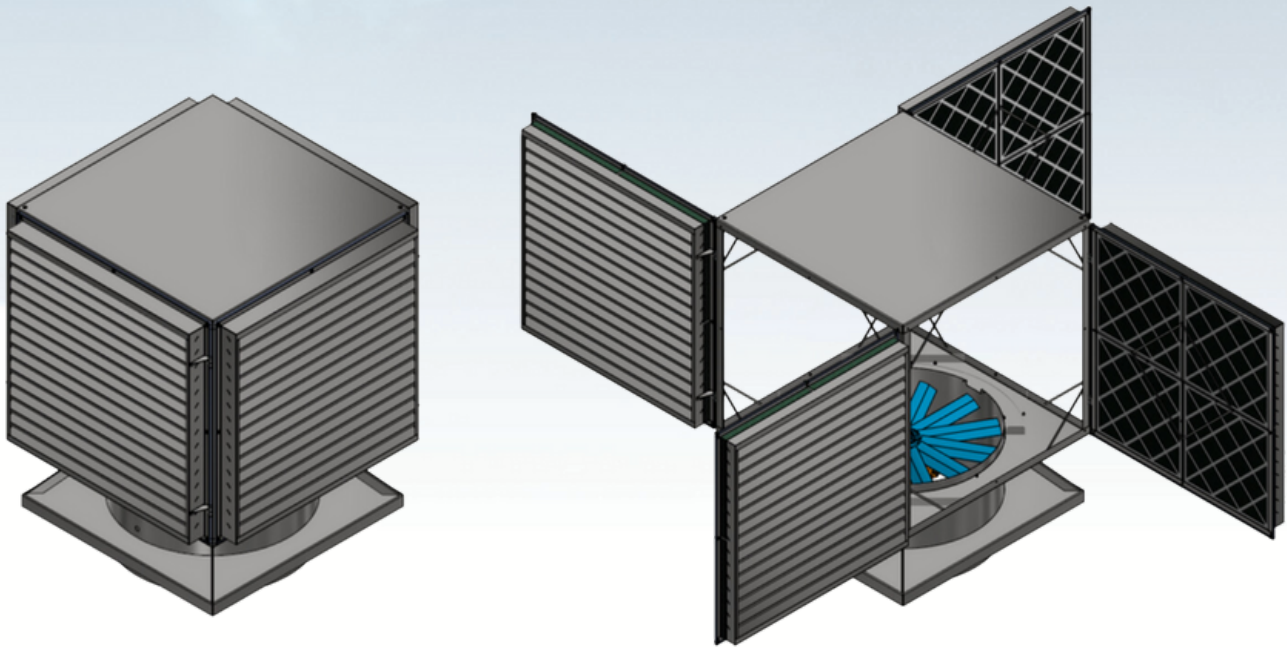


Options

- Aluminium or stainless steel casings
- Aluminium adjustable pitch blades
- Hazardous location rated - Exe, Exd, ExnA, Extd
- IP56 or IP66 motor
- Upstand for fan mounting

- ✓ Weatherproof design
- ✓ Hot dip galvanised casing
- ✓ Powder-coated hinged louvre doors
- ✓ G4 grade replaceable filters
- ✓ IP55 motor
- ✓ GRP adjustable pitch blades
- ✓ External junction box
- ✓ 700mm lead, no plug
- ✓ Bottom spigot for duct connection

Roof Filter Fans.



*Noise level is free field and indicative and should only be used to indicate relative values, as actual figures depend on the fan and relevant field conditions.

Model No.	Fan Dia. (mm)	Motor Speed (RPM)	Motor Power (kW)	Free Air Vol. (L/s)	Weight (kg)	Noise* (dBA@3m)	Voltage (V)
7-30481F	300	2880	0.75	900	150	62	240
7-30483F	300	2880	0.75	900	150	62	415
7-40481F	400	2880	1.10	1500	190	64	240
7-40483F	400	2880	1.10	1500	190	64	415
7-50481F	500	2880	2.20	2400	280	65	240
7-50483F	500	2880	2.20	2400	280	65	415
7-60241F	600	1440	3.00	4300	350	73	240
7-60243F	600	1440	3.00	4300	350	73	415
7-80243F	800	1440	4.00	6800	400	74	415
7-10163F	1000	960	5.50	10000	460	72	415
7-12163F	1000	960	7.50	14000	510	78	415

Portable Blowers / Extractors.

Ducting & capture hood



- ✓ Impact-resistant polyethylene moulded casing
- ✓ Aluminium carry frame
- ✓ Inlet & outlet finger guards
- ✓ IP55 motor
- ✓ Steel impeller
- ✓ Isolation switch
- ✓ 5m lead & 3 pin, 10A plug (240V models)
- ✓ 3m lead, no plug (415V models)
- ✓ Plastic moulded capture hood for increased suction area
- ✓ 5m length of heavy-duty flexible ducting

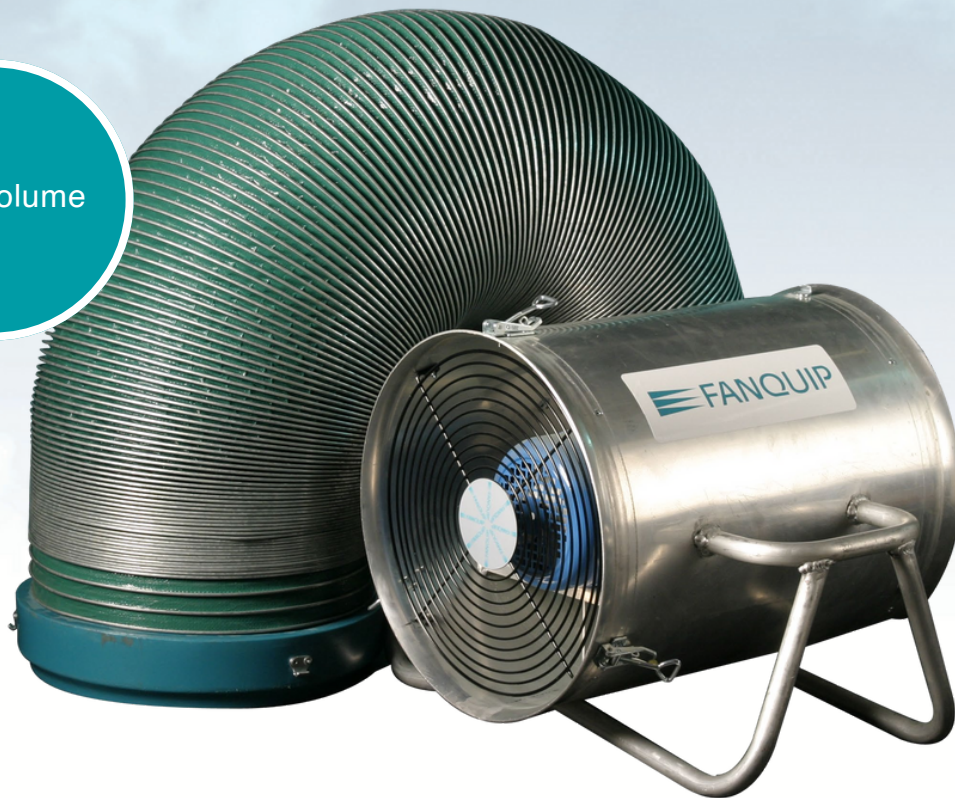
Options

- Hazardous location rated – Exe, Exd, ExnA, Extd
- IP56 or IP66 motor
- Compressed air powered
- Additional lengths of ducting available

Model No.	Fan Dia. (mm)	Motor Speed (RPM)	Motor Power (kW)	Voltage (V)	Free Air Vol. (L/s)
8-15481	150	2880	0.55	450	240
8-15483	150	2880	0.55	450	415
8-20481	200	2880	1.50	890	240
8-20483	200	2880	1.50	890	415

Portable Purging Fans.

High volume



Options

- Stainless steel casing
- Aluminium adjustable pitch blades
- Hazardous location rated – Exe, Exd, ExnA, Extd
- IP56 or IP66 motor
- Compressed air powered
- Additional lengths of ducting available

- ✓ Aluminium casing
- ✓ Inlet & outlet finger guards
- ✓ IP55 motor
- ✓ GRP adjustable pitch blades
- ✓ Isolation switch
- ✓ 5m lead & 3 pin, 10A plug (240V models)
- ✓ 3m leads, no plug (415V models)
- ✓ 5m length of heavy-duty flexible ducting with quick release clamps

Model No.	Fan Dia. (mm)	Motor Speed (RPM)	Motor Power (kW)	Free Air Vol. (L/s)	Voltage (V)
16-30481	300	2880	1.10	1200	240
16-30483	300	2880	1.10	1200	415
16-41481	400	2880	1.50	2200	240
16-41483	400	2880	2.20	2500	415

Vat Purging Fans.



Exhaust or supply

- ✓ Lightweight aluminium casing
- ✓ Inlet & outlet guards
- ✓ IP56 motor
- ✓ GRP adjustable pitch blades
- ✓ Can be used for both exhaust or supply air
- ✓ 5m lead & 3 pin 10A plug



Model No.	Fan Dia. (mm)	Motor Speed (RPM)	Motor Power (kW)	Free Air Vol. (L/s)	Voltage (V)
16-30241WV	300	1400	0.20	600	240
16-40241WV	400	1400	0.20	1450	240
16-60161WV	600	900	0.35	2500	240

Venturi Type Air Movers.



- ✓ Available in galvanised/aluminium construction or anti-static LLDPE plastic/aluminium construction
- ✓ Compressed air powered
- ✓ No moving parts
- ✓ Can be used for supply or exhaust

How do Venturi Air Movers work?

Powered by compressed air, these air movers are used for the dispersion of hazardous fumes, cooling of personnel & machinery, or ventilation of confined spaces.

Model No.	Material	Base Diameter	Outlet Dia. (mm)	Connection Port	Free Air Vol. @ 60PSIG (l/s)	Air Consumed (l/s)	Weight (kg)
VE3S	ALU/GAL	185	150	1/2"	450	24	3
VE3SP	PLASTIC	185	150	1/2"	450	24	2
VE3	ALU/GAL	185	175	1/2"	580	24	4
VE3P	PLASTIC	185	175	1/2"	580	24	3
VE6	ALU/GAL	285	300	1"	1360	47	10
VE6P	PLASTIC	285	300	1"	1360	47	7
VE8	ALU/GAL	365	370	1"	1960	72	17
VE8P	PLASTIC	365	370	1"	1960	72	11

Belt Drive Axial Flow Fans.



External
grease
points

Options

- Aluminium or stainless steel casings
- Powder-coated finish
- Aluminium adjustable pitch blades
- Hazardous location rated - Exe, Exd, ExnA, Extd
- IP56 or IP66 motor
- Inlet & outlet finger guards
- Full range of accessories including angle rings, mounting feet & inlet cones

- ✓ Heavy industrial rolled steel casing
- ✓ Hot dip galvanised finish
- ✓ IP55 motor
- ✓ Aerodynamic belt tube with inspection plate
- ✓ External grease points
- ✓ GRP adjustable pitch blades

Belt Drive Axial Flow Fans.



Model No.	Fan Dia. (mm)	Motor Speed (RPM)	Motor Power (kW)	Free Air Vol. (L/s)	Voltage (V)
12-30241	300	1440	0.55	654	240
12-30243	300	1440	0.55	654	415
12-30481	300	2880	0.75	1397	240
12-30483	300	2880	0.75	1397	415
12-40241	400	1440	0.55	1500	240
12-40243	400	1440	0.55	1500	415
12-40481	400	2880	1.50	2576	240
12-40483	400	2880	1.50	2576	415
12-50241	500	1440	0.75	2459	240
12-50243	500	1440	0.75	2459	415
12-60161	600	960	0.55	3274	240
12-60163	600	960	0.55	3274	415
12-60241	600	1440	1.50	4416	240
12-60243	600	1440	1.50	4416	415
12-70163	700	960	1.10	5216	415
12-70243	700	1440	2.20	5520	415
12-80123	800	720	0.75	5679	415
12-80163	800	960	1.50	7073	415
12-80243	800	1440	4.00	9228	415
12-10163	1000	960	3.00	11600	415
12-12123	1200	720	3.00	16600	415
12-15163	1500	960	5.50	25500	415

Direct Drive Axial Flow Fans.



300mm
- 2200mm
diameter

External
junction
box

Options

- Aluminium or stainless steel casings
- Powder-coated finish
- Bifurcated casing design
- Aluminium adjustable pitch blades
- Straightening vanes
- Smoke spill rated
- Hazardous location rated - Exe, Exd, ExnA, Extd
- IP56 or IP66 motor
- Inlet & outlet finger guards
- Full range of accessories including angle rings, mounting feet & inlet cones

- ✓ Heavy industrial rolled steel casing
- ✓ Hot dip galvanised finish
- ✓ IP55 motor
- ✓ GRP adjustable pitch blades
- ✓ Made in Australia

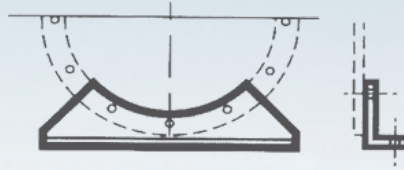
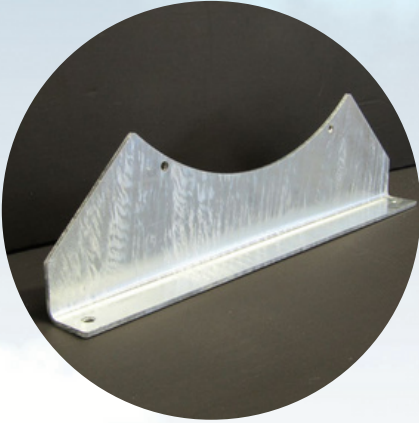
Direct Drive Axial Flow Fans.



Model No.	Fan Dia. (mm)	Motor Speed (RPM)	Motor Power (kW)	Free Air Vol. (L/s)	Voltage (V)
2-30241	300	1440	0.37	654	240
2-30243	300	1440	0.37	654	415
2-30481	300	2880	0.75	1397	240
2-30483	300	2880	0.75	1397	415
2-40241	400	1440	0.55	1500	240
2-40243	400	1440	0.55	1500	415
2-40481	400	2880	1.50	2576	240
2-40483	400	2880	1.50	2576	415
2-50241	500	1440	0.75	2459	240
2-50243	500	1440	0.75	2459	415
2-60161	600	960	0.37	3274	240
2-60163	600	960	0.37	3274	415
2-60241	600	1440	1.50	4416	240
2-60243	600	1440	1.50	4416	415
2-70163	700	960	1.10	5216	415
2-70243	700	1440	1.50	5520	415
2-80123	800	720	0.55	5679	415
2-80163	800	960	1.10	7073	415
2-80243	800	1440	3.00	9228	415
2-10163	1000	960	2.20	16600	415
2-12123	1200	720	3.00	16600	415
2-15163	1500	960	5.50	25500	415
2-18123	1800	720	11.0	36300	415
2-20123	2000	720	22.0	42650	415
2-22123	2200	720	22.0	55440	415

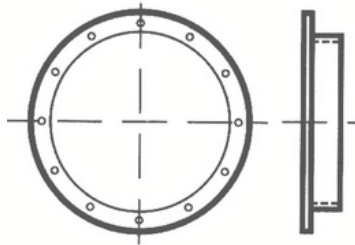
Axial Attachments.

Mounting Feet



To Fit Fan	Model No.
300	14-2022
400	14-2023
500	14-2024
600	14-2025
700	14-2026
800	14-2027
1000	14-2028
1200	14-2029
1500	14-2030

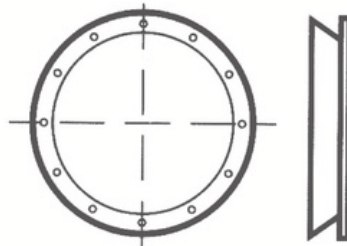
To Fit Fan	ID/OD	Model No.
300	310/316	14-2011
400	410/416	14-2012
500	510/516	14-2013
600	610/616	14-2014
700	710/716	14-2015
800	810/816	14-2016
1000	1010/1016	14-2017
1200	1220/1226	14-2018
1500	1525/1531	14-2019



Standard Angle Rings

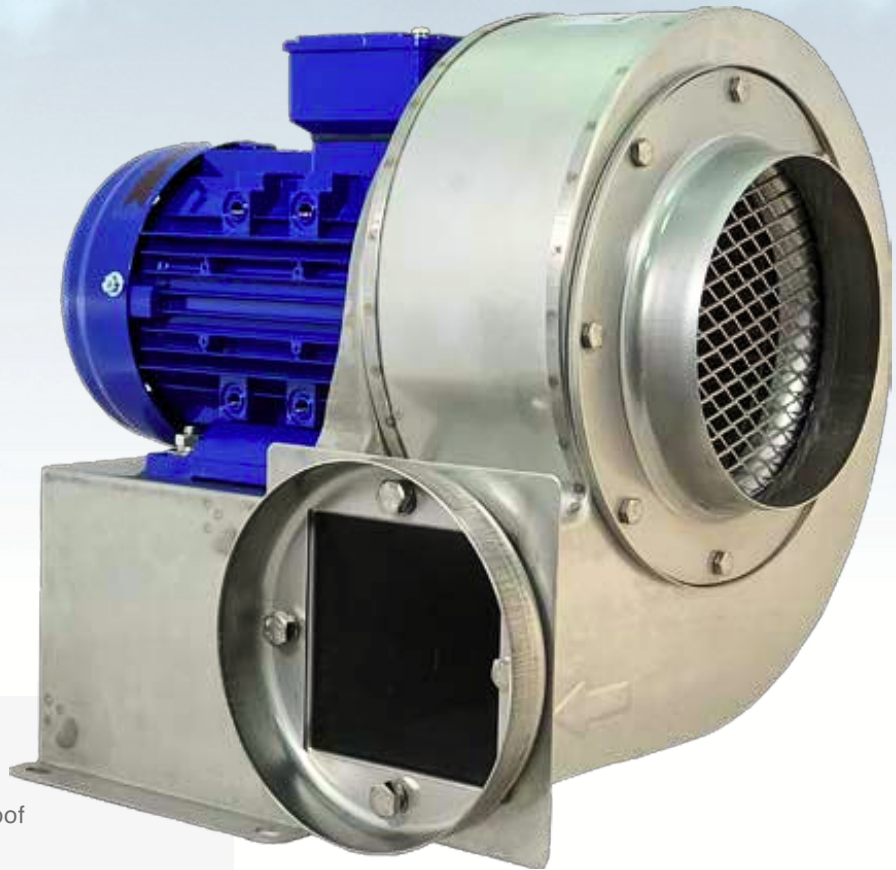


Inlet Cones



To Fit Fan	Model No.
300	14-2033
400	14-2034
500	14-2035
600	14-2036
700	14-2037
800	14-2038
1000	14-2039
1200	14-2040
1500	14-2041

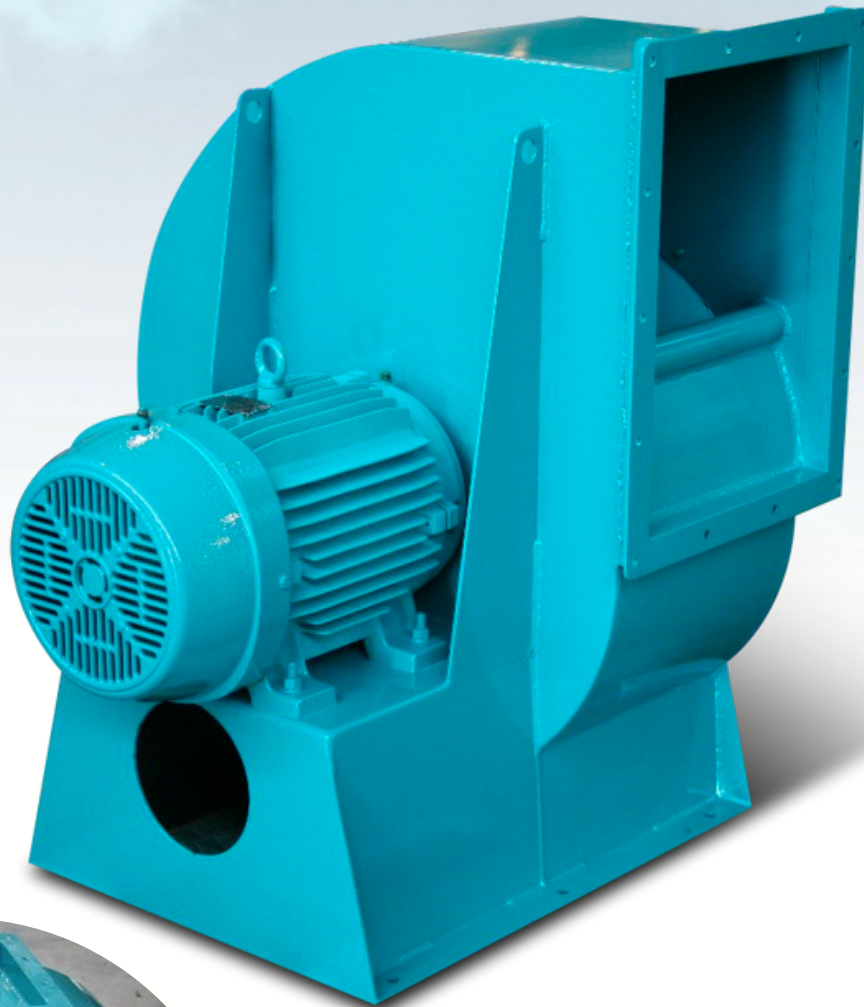
Forward Curve Centrifugal Fans.



- ✓ Stainless steel casing
- ✓ Washdown duty/hoseproof
- ✓ IP56 rating

Model No.	Inlet Diameter (mm)	Outlet Diameter (mm)	Motor Speed (RPM)	Motor Power (kW)	Voltage (V)	Air Volume (L/s)	Static Pressure (PA)
CY076-S	76	50	2880	0.25	240	5	118
						13	100
						27	0
CY150-S	150	150	2880	0.37	415	50	530
						100	480
						200	0
CY180-S	150	150	2880	0.75	415	84	820
						180	770
						360	0
CY200-S	200	200	2880	1.5	415	133	1300
						300	1000
						600	0

Backward Inclined Centrifugal Fans.



Clean air/light dust load handling fan
High volume – low noise

- ✓ Backward inclined impeller
- ✓ Australian made
- ✓ Heavy industrial duty
- ✓ IP55 motor
- ✓ Premium powder-coated steel casing
- ✓ Large range of sizes available
- ✓ Built to specifications

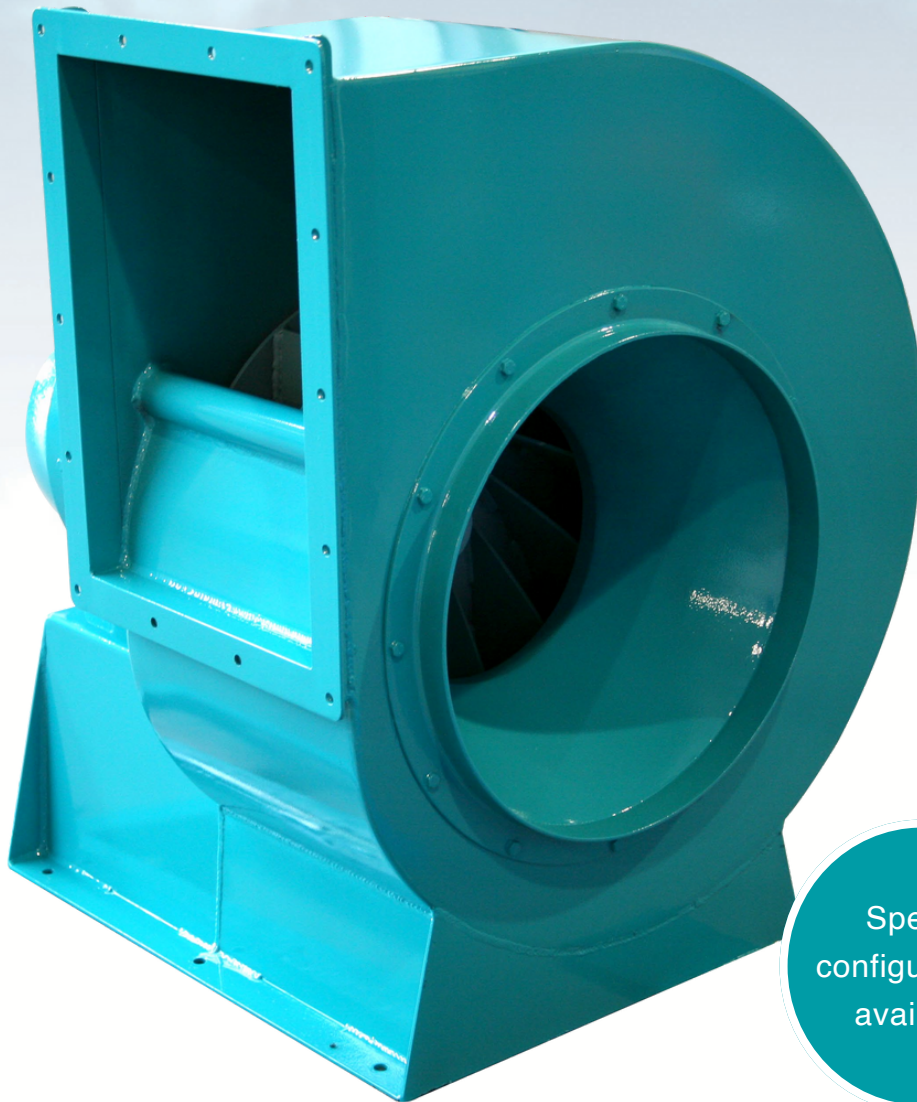
Backward Inclined Centrifugal Fans.

Options

- Stainless steel casing
- Hot dip galvanised or epoxy paint finish
- Hazardous location rated - Exe, Exd, ExnA, Extd
- IP56 or IP66 motor
- Direct Drive or Belt Drive
- Full range of accessories including silencers, anti-vibration isolators & VSDs



Materials Handling Centrifugal Fans.



Special configurations available

- ✓ Radial impeller
- ✓ Australian made
- ✓ Heavy industrial duty
- ✓ IP55 motor
- ✓ Premium powder-coated steel casing
- ✓ Large range of sizes available built to specifications

What is the purpose of a Materials Handling Fan?

Rugged steel impeller is ideal for dust conveying or other industrial airstreams, erosive installations and material handling applications.

Materials Handling Centrifugal Fans.



Options

- Stainless steel casing
- Hot dip galvanised or epoxy paint finish
- Hazardous location rated - Exe, Exd, ExnA, Extd
- IP56 or IP66 motor
- Direct Drive or Belt Drive
- Full range of accessories including silencers, anti-vibration isolators & VSDs



Dust Collection Systems.

Dust Control is an integral part of many industrial processes. Whether for the purpose of pollution control and/or product recovery, it is imperative that dust control systems are sized and selected to ensure energy and production efficiency is achieved.

Fanquip can help solve your dust problems.

Fanquip have the expertise to select the appropriately sized dust collector for any application. We have team members from vast industrial backgrounds including pollution control, giving you the confidence that your next dust control project will be a wise investment with Fanquip's unsurpassed expertise and product offering.

Fanquip have multiple dust control technologies to choose from, including:

- ✓ Cyclonic filtration
- ✓ Reverse air
- ✓ Reverse pulse



Having multiple technologies means the most appropriate solution can be offered to suit any application. When partnering with Fanquip, you can rest assured that the solution Fanquip offer will ensure compliance, be the most efficient, and have the lowest total cost of ownership.

Fume Extractors.

Mobile Fume Extractors

- ✓ Premium powder-coated steel casing
- ✓ Metal mesh prefilter for sparks
- ✓ F9 main cartridge filter
- ✓ 160mm dia, 3000mm long articulated fume arm/s
- ✓ 4m lead & 3 pin 15A plug (415V models exclude plug)
- ✓ Heavy duty castors for ease of handling
- ✓ Ideal for capturing welding fumes, grinding dusts, dry dusts & soldering fumes



Multistage filtration

Model No.	No. of Arms	Motor Speed (RPM)	Motor Power (kW)	Voltage (V)	Full Load Amps (A)	Free Air Volume (l/s) per hood	Noise* (dBA @ 3m)	Weight (kg)
FE-3151-S2	1	2880	1.1	240	6.4	278	74	110
FE-3153-S2	1	2880	1.1	415	2.5	278	74	110
FE-2X3151-S2	2	2880	1.1	240	6.4	236	74	110
FE-2X3153-S2	2	2880	1.1	415	2.5	236	74	110

Negative Air Units.



No.1 unit
in the
asbestos
industry

Pre-filter
and HEPA
filter

- ✓ Heavy-duty castors for ease of handling
- ✓ Inlet duct connection spigot
- ✓ Internal pressure monitor with warning light
- ✓ Side mount carry handles
- ✓ Two speed
- ✓ Two-stage filtration with both pre-filter and HEPA filter, 99.97% efficiency @ 0.3 micron
- ✓ Lead & 3 pin 10A plug

Model No.	Motor Speed (RPM)	Motor Power (kW)	Voltage (V)	Free Air Vol. (L/s)	Weight (kg)
10-NG241	1625/1440	0.75	240	944/755	75

Heater Fans.

No naked flames

- ✓ Premium powder-coated steel casing
- ✓ Thermal cut-outs for safety
- ✓ No naked flames
- ✓ GRP adjustable pitch blades
- ✓ Available in trolley mount or wall mount



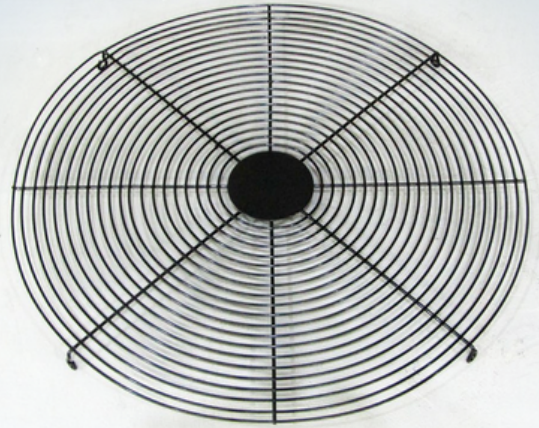
Model No.	Element Power (kW)	Motor Speed (RPM)	FL (amp)	Heat Generated (kJ)	Voltage (V)
11-703*	7	1440	10	25200	415
11-1403*	14	1440	15	50400	415
11-1803*	18	1440	20	64800	415
11-2103*	21	1440	32	75600	415
11-2403*	24	1440	40	86400	415
11-3603*	36	1440	52	129600	415

*Add T to model no. for Trolley Mount or W for Wall Mount.

Fan Ancillaries.

Finger Guards

- ✓ Prevents foreign objects from entering fan
- ✓ Complies to Australian standards safety requirements
- ✓ Also available with special coatings and stainless steel construction



Anti-Vibration Isolators

- ✓ High isolation efficiency
- ✓ Rubber mounts & hangers
- ✓ Spring mounts & hangers
- ✓ Seismic mounts

Variable Speed Drives

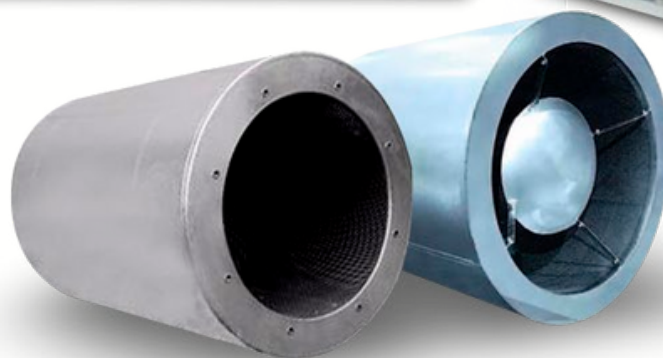
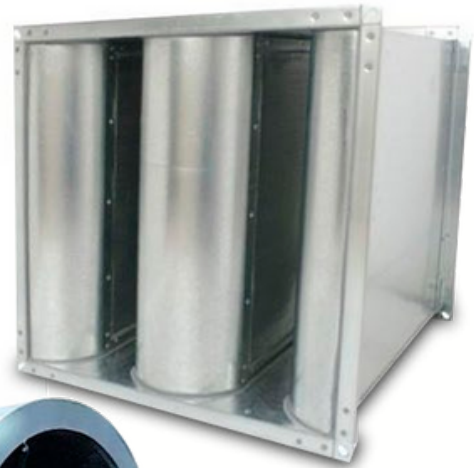
- ✓ Three phase or single phase input
- ✓ IP20 or IP66
- ✓ EMC compliant
- ✓ User friendly interface



Silencers.



- ✓ Available in a range of designs including rectangular, circular, elbows, & louvres
- ✓ Galvanised sheet steel or stainless steel construction
- ✓ Perforated internal lining
- ✓ Glass wool or fibreglass infill
- ✓ Range of different sizes available to suit application



Impellers.



Up to 12
blades

Fast Delivery

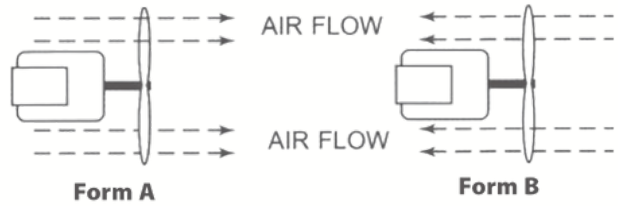
When ordering the following must be specified:

- Volume flow
- Static pressure
- Form A or B
- Motor shaft diameter impeller bore
- Motor speed & kW
- Rotation direction

The most efficient aerofoil available

- ✓ Diameter 250mm - 2800mm
- ✓ Constructed of aluminium or glass-reinforced plastic
- ✓ Available with 2, 3, 4, 6, or 12 blades
- ✓ P190 GRP straight bore - 1/2", 5/8", 19mm, 24mm, 1"
- ✓ G230 and P160 have taper lock bushes
- ✓ Anti-static design available
- ✓ Interchangeable with other brands

Impellers.



Hub Series/ Material	Blade Series/ Material	Diameter (mm)	Max Bore Size (mm)	Max Power (kW)	Max Tip Speed (m/s)
P190 GRP	395 GRP	300-980	1"	3	70
P190 GRP	685 GRP	600-1560	1"	3	65
P160 AL	395 GRP	250-950	32	7.5	75
P160 AL	600 AL	300-1360	32	15	80
G230 AL	395 GRP	300-1020	42	5.5	70
G230 AL	685 GRP	300-1600	42	22	77
G230 AL	600 AL	300-1430	42	75	70

Contact us

✉ sales@fanquip.com.au

☎ 1300 224 308

📍 Head Office
1 Civic Avenue, Singleton NSW 2330 Australia

📍 Warehouse
23 Ash Road, Prestons NSW 2170 Australia

