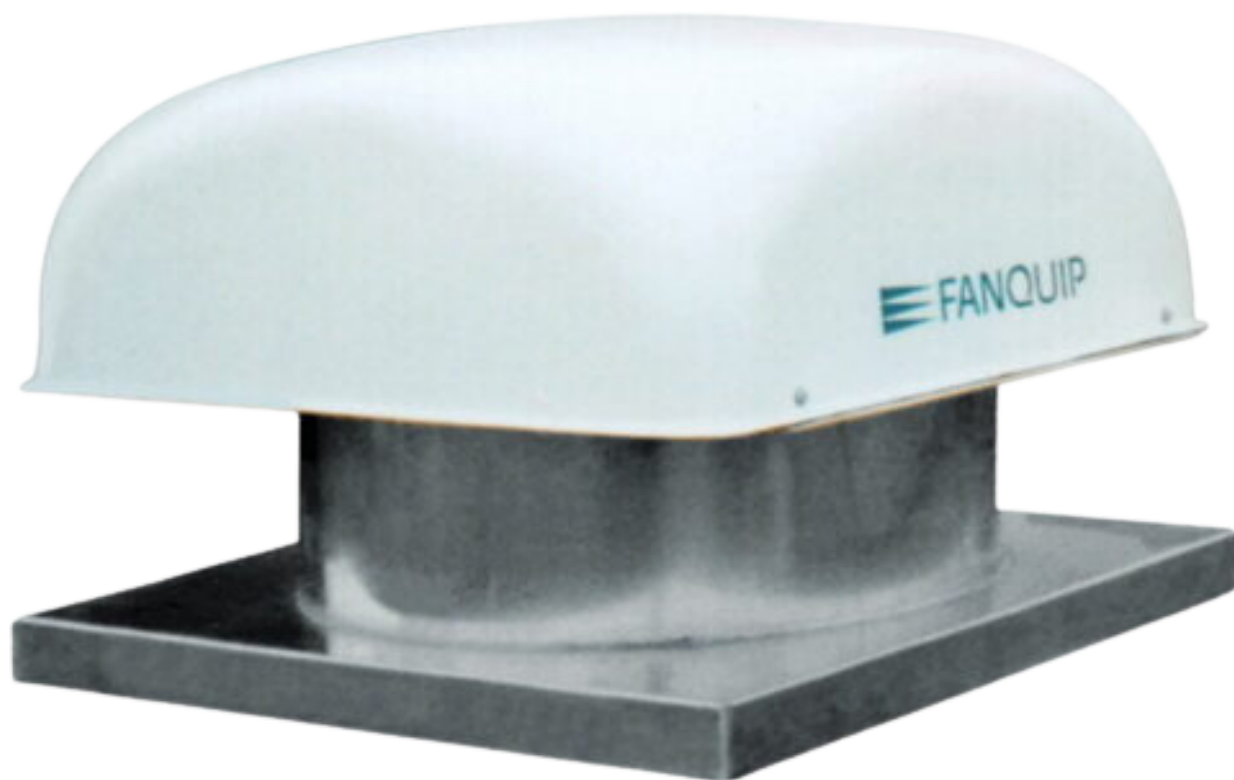


Curb Base Roof Fan.

Product datasheet



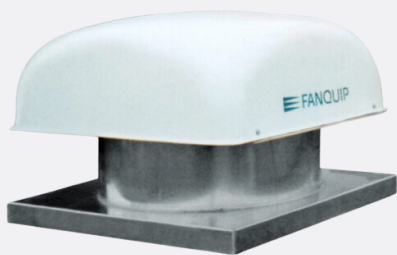
 FANQUIP

Curb Base Roof Fan.

The Fanquip Curb Base Hooded Roof Fans are a heavy duty, weatherproof roof exhaust fan designed for the removal of heat, steam and dust in commercial and industrial applications. Also available as a supply fan for building makeup air.

The Fanquip Curb Base Hooded Roof Fan is available using adjustable pitch GRP (Glassfiber Reinforced Polypropylene) or cast aluminium airfoil impellers. The casing is fully welded mild steel construction with a hot dip galvanised finish. A weatherproof fibreglass hood is bolted to the casing to entirely cover the fan outlet while offering the least resistance to flow. Heavy duty plastic mesh is fitted beneath the hood to protect against ingress of birds. The units are fitted with single-phase 240V or three-phase 415V heavy-duty motors of rugged construction, which incorporate sealed ball bearings to reduce operating noise. There are a comprehensive range available with fan diameters ranging from 300mm to 1200mm.

Key features.



- ✓ Exhaust or supply air versions available
- ✓ Fibreglass hood/Hot dip galvanised casing
- ✓ Birdmesh protection
- ✓ IP55 motor
- ✓ GRP adjustable pitch blades
- ✓ Weatherproof design
- ✓ External junction box
- ✓ 700mm lead no plug

Applications.

The Curb Base Roof Fan has an extensive range of applications.

Installation locations.

- ✓ Factories
- ✓ Hospitals
- ✓ Office buildings
- ✓ Warehouses
- ✓ Manufacturing
- ✓ Processing plants

Extraction applications.

- ✓ Fumes
- ✓ Contaminated air
- ✓ Heat
- ✓ Steam



Options.

- Aluminium or stainless steel casings
- Wide range of colour options available
- Belt driven or bifurcated design
- Aluminium adjustable pitch blades
- Hazardous location rated – Exe, Exd, ExnA, Extd
- IP56 or IP66 motor
- Available without fan/motor as a relief vent
- Upstand for fan mounting

Technical advice.

Fanquip have technical consultants to provide guidance on the specifications required to suit your Curb Base Roof Fan use and application.

Warranty.

Twelve-month guarantee on the mechanical and electrical componentry subject to satisfactory maintenance with assessment and rectification, if any, to take place after return by the customer to Fanquip's workshop. Extended warranty options available on request.

Installation & maintenance.

The necessary procedures are outlined in the Fanquip installation, operation and maintenance instructions. These should be followed to ensure satisfactory performance and service life.

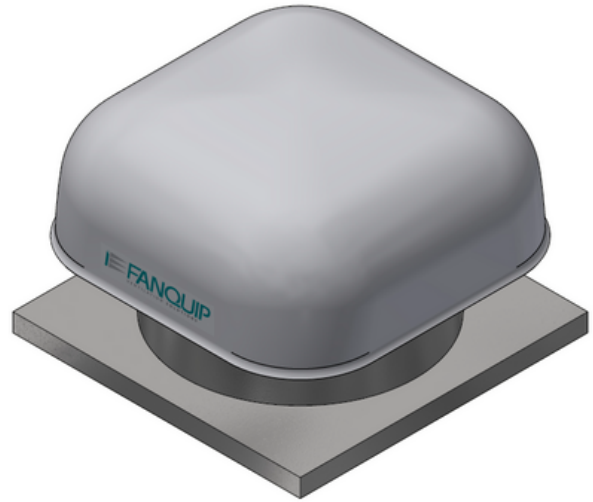
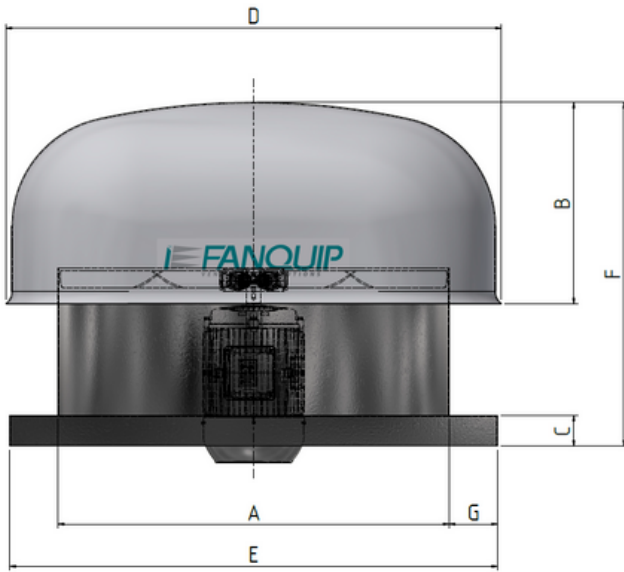
Curb Base Roof Fan.

Product specifications.

Model no.	Fan diameter (mm)	Motor speed (RPM)	Motor power (kW)	Voltage (V)	Full load amps (A)	Free air volume (L/S)	Noise* (dBA@3m)	Weight (kg)
7-30241	300	1440	0.37	240	2.40	600	48	30
7-30243	300	1440	0.37	415	1.03	600	48	30
7-30481	300	2880	0.55	240	3.30	1100	62	30
7-30483	300	2880	0.55	415	1.40	1100	62	30
7-40241	400	1440	0.55	240	3.80	1480	50	36
7-40243	400	1440	0.55	415	1.63	1480	50	36
7-50161	500	960	0.37	240	2.40	1629	51	62
7-50163	500	960	0.37	415	1.32	1629	51	62
7-50241	500	1440	0.75	240	4.80	2350	60	62
7-50243	500	1440	0.75	415	1.94	2350	60	62
7-60161	600	960	0.37	240	2.60	3010	60	75
7-60163	600	960	0.37	415	1.32	3010	60	75
7-60241	600	1440	1.1	240	6.60	4300	68	75
7-60243	600	1440	1.1	415	2.60	4300	68	75
7-80123	800	720	0.55	415	2.10	5400	59	100
7-80163	800	960	1.1	415	3.00	6800	65	100
7-10123	1000	720	1.5	415	4.20	10000	63	150
7-12123	1200	720	2.2	415	6.00	14000	69	180

*Noise level is free field and indicative and should only be used to indicate relative values as actual figures depend on the fan and relevant field conditions.

Curb Base Roof Fan.



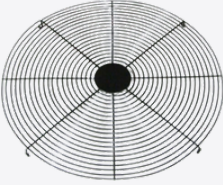

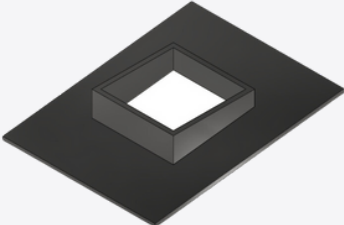
Product dimensions.

Diameter (mm)	A (mm)	B (mm)	C (mm)	D (mm)	E (mm)	F (mm)	G (mm)
300	310	120	60	420	430	280	60
400	410	180	60	730	540	490	65
500	510	230	75	940	650	600	70
600	610	230	75	1060	760	600	70
800	810	485	75	1380	1060	850	120
1000	1010	470	80	1380	1260	920	120
1200	1220	450	100	1460	1460	960	115

*All sizes shown are standard. Subject to change without notice.

Curb Base Roof Fan.

Accessories

Accessory	Specifications
<p>Finger Guards</p> 	<ul style="list-style-type: none">✓ Fan guards are available for any of our circular fans, and stop foreign objects from entering the fan. Complies to Australian Standards of safety requirements.✓ Painted finish.
<p>Variable Speed Drives</p> 	<ul style="list-style-type: none">✓ 3 phase or single phase input. IP20 or IP66 and EMC compliant. User friendly interface.
<p>Mounting Upstands</p> 	<ul style="list-style-type: none">✓ Pre-fabricated roof mounting upstand for Fanquip roof fans.✓ Galvanised sheet metal construction.✓ Available to suit all metal roof profiles and pitch angles.

Product datasheet.

Curb Base Roof Fan.



Shop Curb Base
Roof Fans



1300 224 308



www.fanquip.com.au